

Ordinance No. \_\_\_\_\_

Passed \_\_\_\_\_, 20\_\_\_\_

ORDINANCE Q - 12

AN ORDINANCE AMENDING THE ZONING MAP CREATED BY CHAPTER 1120 OF THE CODIFIED ORDINANCES OF THE CITY OF ORRVILLE, OHIO, TO RECLASSIFY PARCEL OF LAND KNOWN AS LOT NUMBER 225 ALSO KNOWN AS 147 WEST CHESTNUT STREET IN THE CITY OF ORRVILLE FROM I-2 (HEAVY INDUSTRIAL) TO R-3 (RESIDENTIAL).

BE IT ORDAINED by the Council of the City of Orrville, Ohio:

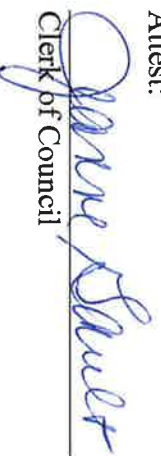
Section 1: The zoning map created by Chapter 1120 of the Codified Ordinances of the City of Orrville, Ohio, is hereby amended to reclassify parcel of land known as lot number 225 in the City of Orrville as shown on the attached Exhibit "A" from I-2 (Heavy Industrial) to R-3 (Residential).

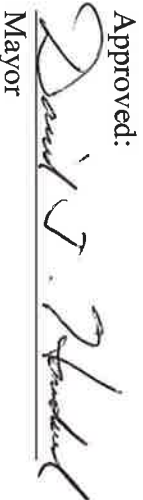
Section 2. That this Ordinance shall be in full force and effect from and after the earliest period allowed by law.

Passed this 3rd day of December 2012.

  
President of Council

Attest:

  
Clerk of Council

Approved:  
  
Mayor

Date 12/3/12

DEPT. OF REVENUE  
 1958  
 1503

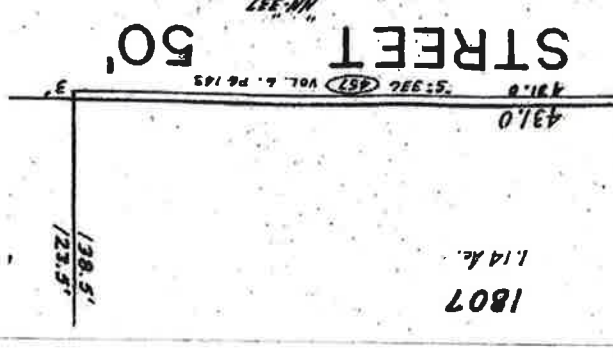
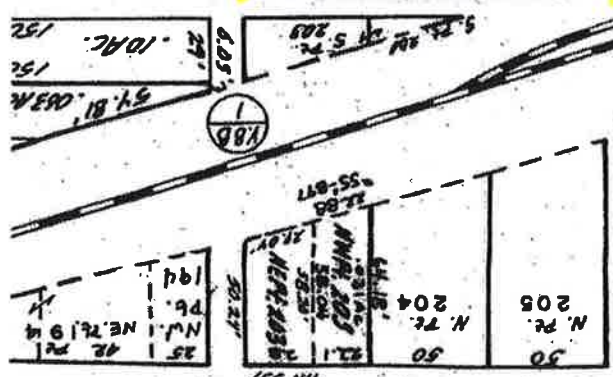
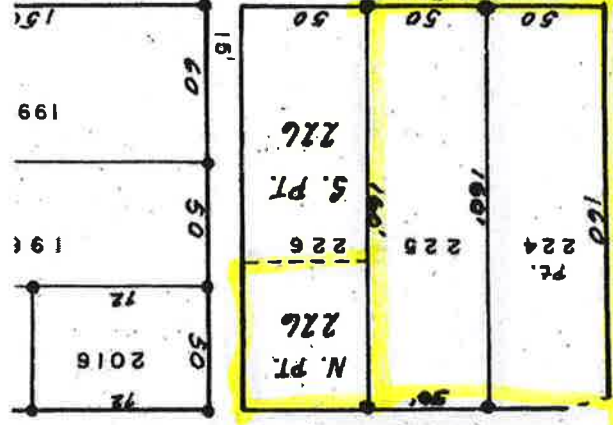
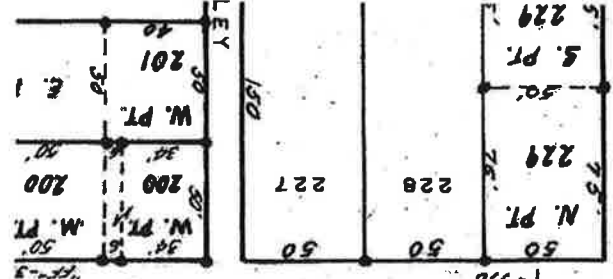
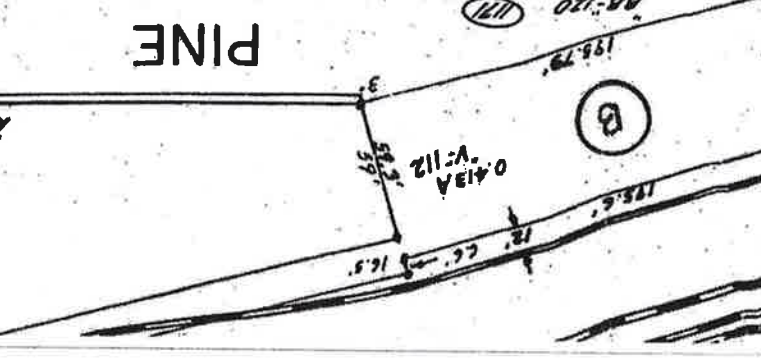
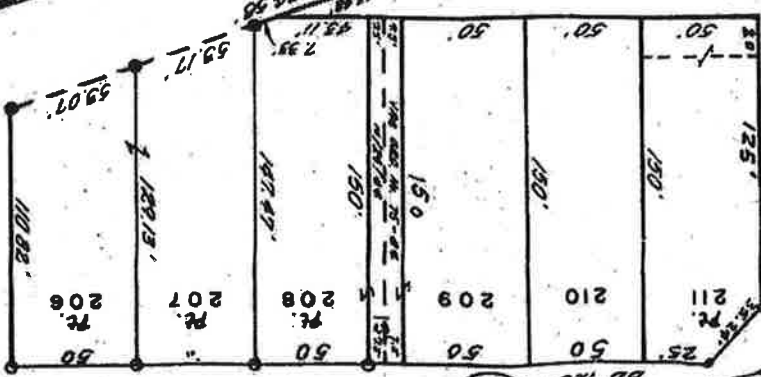
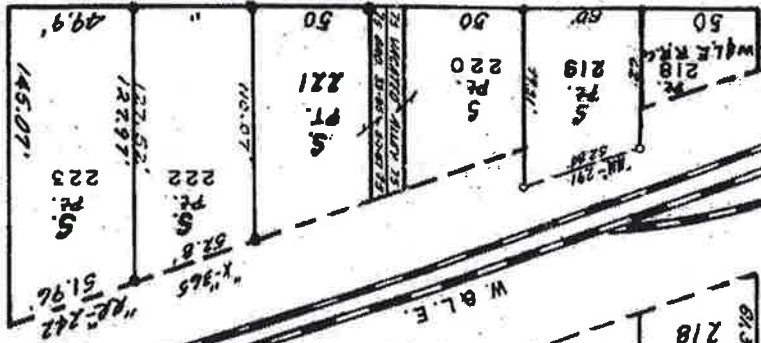
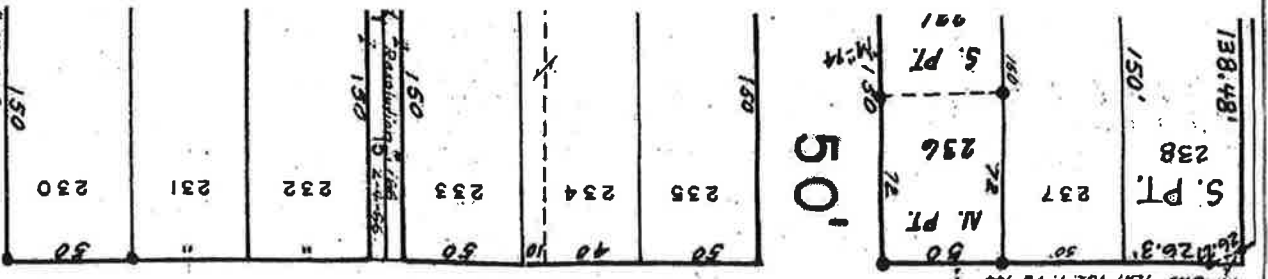
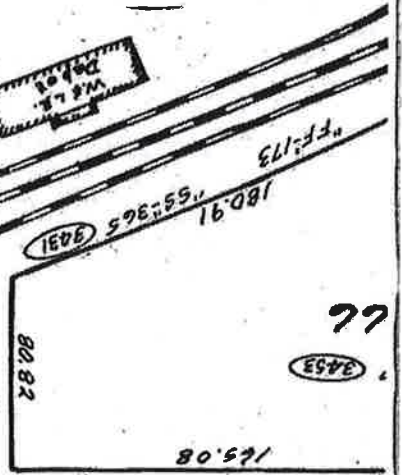
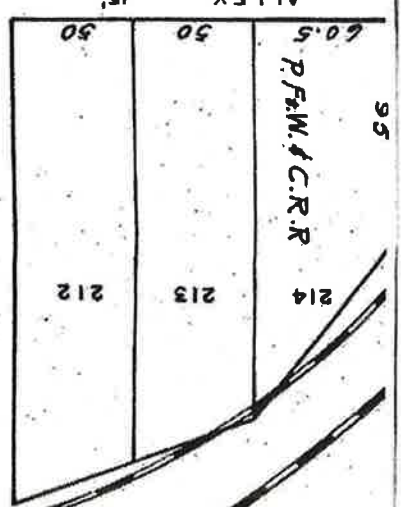


EXHIBIT A

1807  
 1.14 Ac.

431.0  
 2109

(B)

0.413A  
 W:112  
 V:57

16.5

178.6'

53.8'

12'

195.79'

BB-120 (171)

STREET 50'

PINE

—CHESTNUT STREET

50'

60'

50'

(3453)

P.F.W. & C.R.R.

ALLEY

15.08

60.5

50

50

15'

15.08

60.5

50

50

15'

15.08

60.5

50

50

15'

15.08

60.5

50

50

15'

15.08

60.5

50

50

15'

15.08

60.5

50

50

15'

15.08

60.5

50

50

15'

15.08

60.5

50

50

15'

15.08

60.5

50

50

15'

15.08

60.5

50

50

15'

15.08

60.5

50

50

15'

15.08

60.5

50

50

15'

15.08

60.5

50

50

15'

15.08

60.5

50

50

15'

15.08

60.5

50

50

15'

15.08

60.5

50

50

15'

15.08

60.5

50

50

15'

15.08

60.5

50

50

15'

15.08

60.5

50

50

15'

15.08

60.5

50

50

15'

15.08

60.5

50

50

15'

15.08

60.5

50

50

15'

15.08

60.5

50

50

15'

15.08

60.5

50

50

15'

15.08

60.5

50

50

15'

15.08

60.5

50

50

15'

15.08

60.5

50

50

15'

15.08

60.5

50

50

15'

15.08

60.5

50

50

15'

15.08

60.5

50

50

15'

15.08

60.5

50

50

15'

15.08

60.5

50

50

15'

15.08

60.5

50

50

15'

15.08

60.5

50

50

15'

15.08

60.5

50

50

15'

15.08

60.5

50

50

15'

15.08

60.5