

# RECORD OF ORDINANCES

0473

Ordinance No. \_\_\_\_\_ Passed \_\_\_\_\_, 20\_\_

## ORDINANCE P - 12

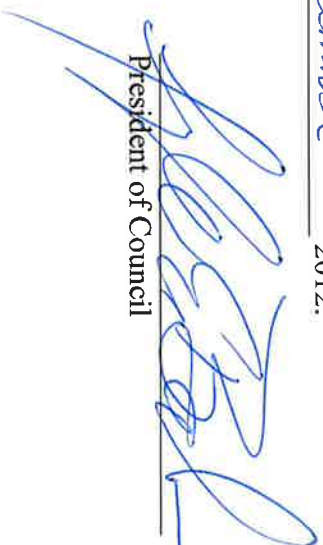
AN ORDINANCE AMENDING THE ZONING MAP CREATED BY CHAPTER 1120 OF THE CODIFIED ORDINANCES OF THE CITY OF ORRVILLE, OHIO, TO RECLASSIFY PARCEL OF LAND KNOWN AS LOT NUMBER N PT 226 ALSO KNOWN AS 239 SOUTH MAIN STREET REAR IN THE CITY OF ORRVILLE FROM C-2 (LOCAL COMMERCIAL) TO R-3 (RESIDENTIAL).

BE IT ORDAINED by the Council of the City of Orrville, Ohio:

Section 1: The zoning map created by Chapter 1120 of the Codified Ordinances of the City of Orrville, Ohio, is hereby amended to reclassify parcel of land known as lot number N Pt 226 in the City of Orrville as shown on the attached Exhibit "A" from C-2 (Local Commercial) to R-3 (Residential).

Section 2. That this Ordinance shall be in full force and effect from and after the earliest period allowed by law.

Passed this 3<sup>rd</sup> day of December 2012.

  
President of Council

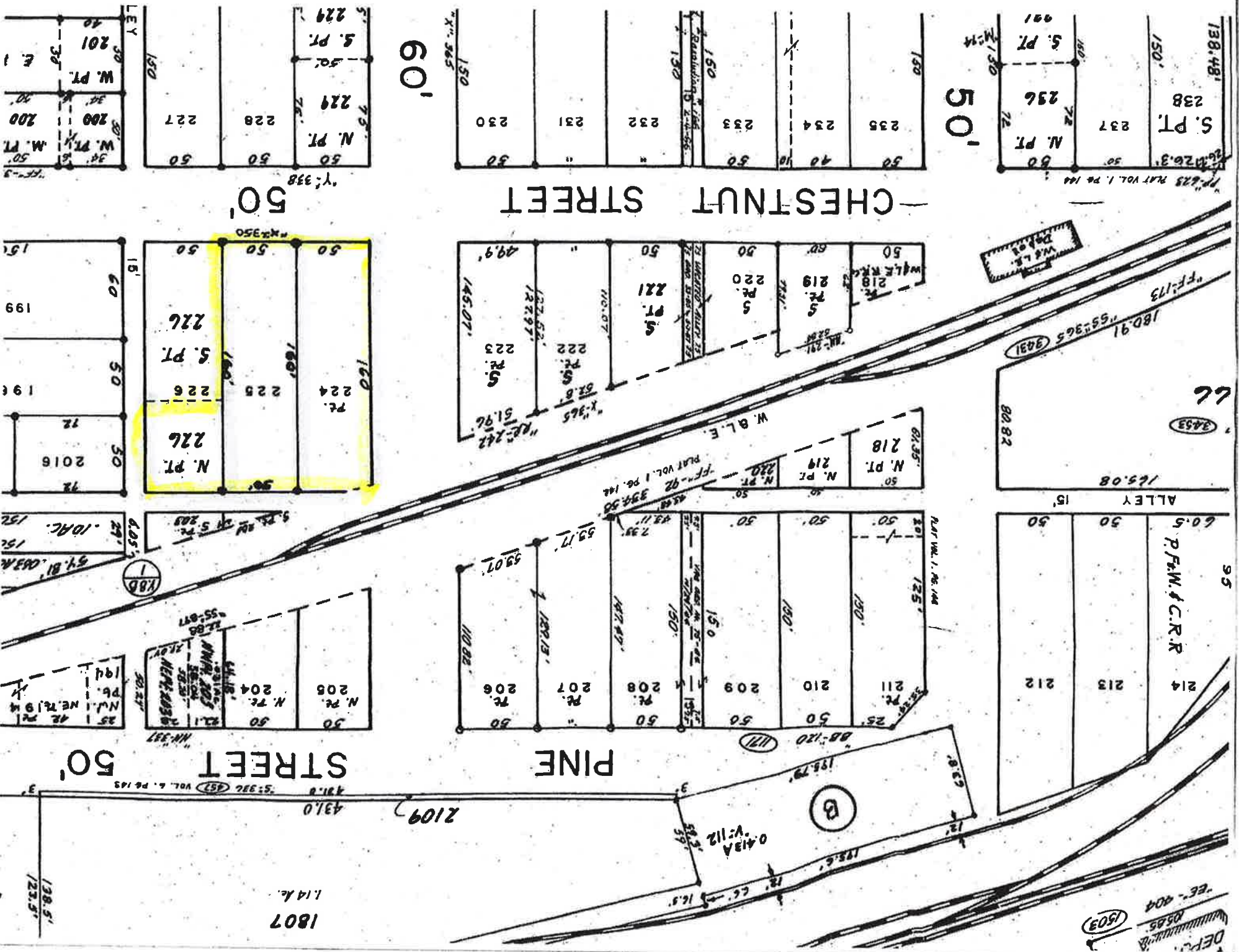
Attest:

  
Clerk of Council

Approved:  
  
Mayor

Date 12/3/12

EXHIBIT A



DEPT. OF REVENUE  
 1885  
 1503

1807  
 1.14 A.

2109

(B)

0.413 A  
 W: 112.5'  
 S: 59.5'

431.0  
 5:382 (457) VOL. 6, PG. 145

STREET 50'

PINE

STREET 50'

STREET

50'

ALLEY 15'

60.5

P.F.W. & C.R.R.

W. B. L. E.

CHESTNUT STREET

50'

60'

50'

150'

150'

150'

150'

138.48'

15'

60'

145.07'

122.62'

126.97'

51.92'

51.92'

51.92'

51.92'

51.92'

51.92'

51.92'

51.92'

51.92'

51.92'

51.92'

51.92'

51.92'

51.92'

51.92'

145.07'

122.62'

126.97'

51.92'

51.92'

51.92'

51.92'

51.92'

51.92'

51.92'

51.92'

51.92'

51.92'

51.92'

51.92'

51.92'

51.92'

51.92'

145.07'

122.62'

126.97'

51.92'

51.92'

51.92'

51.92'

51.92'

51.92'

51.92'

51.92'

51.92'

51.92'

51.92'

51.92'

51.92'

51.92'

51.92'

145.07'

122.62'

126.97'

51.92'

51.92'

51.92'

51.92'

51.92'

51.92'

51.92'

51.92'

51.92'

51.92'

51.92'

51.92'

51.92'

51.92'

51.92'

145.07'

122.62'

126.97'

51.92'

51.92'

51.92'

51.92'

51.92'

51.92'

51.92'

51.92'

51.92'

51.92'

51.92'

51.92'

51.92'

51.92'

51.92'

145.07'

122.62'

126.97'

51.92'

51.92'

51.92'

51.92'

51.92'

51.92'

51.92'

51.92'

51.92'

51.92'

51.92'

51.92'

51.92'

51.92'

51.92'

145.07'

122.62'

126.97'

51.92'

51.92'

51.92'

51.92'

51.92'

51.92'

51.92'

51.92'

51.92'

51.92'

51.92'

51.92'

51.92'

51.92'

51.92'

145.07'

122.62'

126.97'

51.92'

51.92'

51.92'

51.92'

51.92'

51.92'

51.92'

51.92'

51.92'

51.92'

51.92'

51.92'

51.92'

51.92'

51.92'

145.07'

122.62'

126.97'

51.92'

51.92'

51.92'

51.92'

51.92'

51.92'

51.92'

51.92'

51.92'

51.92'

51.92'

51.92'

51.92'

51.92'

51.92'

145.07'

122.62'

126.97'

51.92'

51.92'

51.92'

51.92'

51.92'

51.92'

51.92'

51.92'

51.92'

51.92'

51.92'

51.92'

51.92'

51.92'

51.92'

145.07'

122.62'

126.97'

51.92'

51.92'

51.92'

51.92'

51.92'

51.92'

51.92'

51.92'

51.92'

51.92'

51.92'

51.92'

51.92'

51.92'

51.92'

145.07'

122.62'

126.97'

51.92'

51.92'

51.92'

51.92'

51.92'

51.92'

51.92'

51.92'

51.92'

51.92'

51.92'

51.92'

51.92'

51.92'

51.92'

145.07'

122.62'

126.97'

51.92'

51.92'

51.92'

51.92'

51.92'

51.92'

51.92'

51.92'

51.92'

51.92'

51.92'

51.92'

51.92'

51.92'

51.92'

145.07'

122.62'

126.97'

51.92'

51.92'

51.92'

51.92'

51.92'

51.92'

51.92'

51.92'

51.92'

51.92'

51.92'

51.92'

51.92'

51.92'

51.92'

145.07'

122.62'

126.97'

51.92'

51.92'

51.92'